

XLIX CONGRESSO REGIONALE S.O.Si.

PRESIDENTE: PROF. PASQUALE ARAGONA

10-12 APRILE 2025

UNAHOTELS - NAXOS BEACH SICILIA (ME)

EARLY DRY EFFECT DI FARICIMAB

Monica Gagliardo, Maria Vadalà, Gianluca Li Greci,
Manfredi Fasulo, Vincenza Maria Elena Bonfiglio

U.O.C Policlinico Universitario
P.Giaccone Palermo





FARICIMAB

3D DUAL

DRYING

DURABILITY

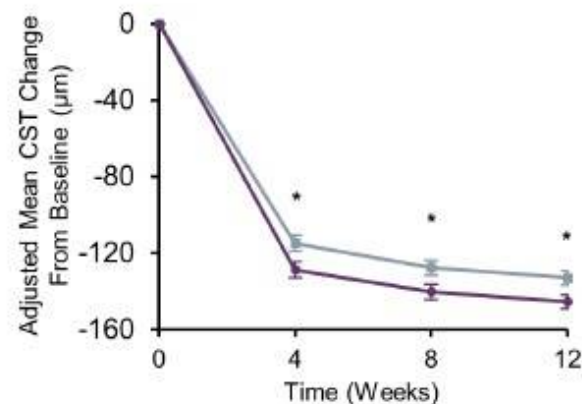
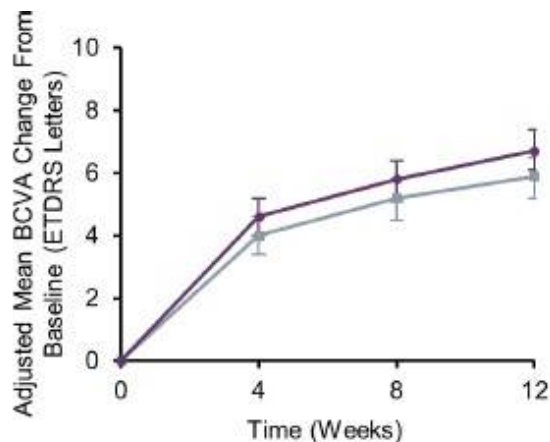
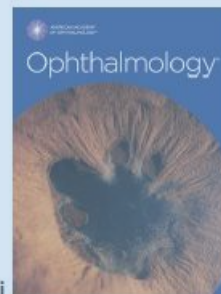




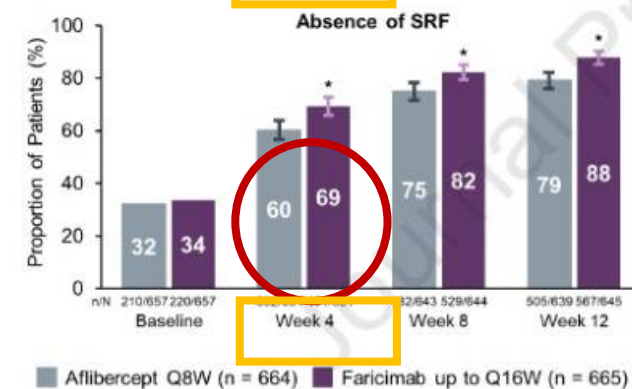
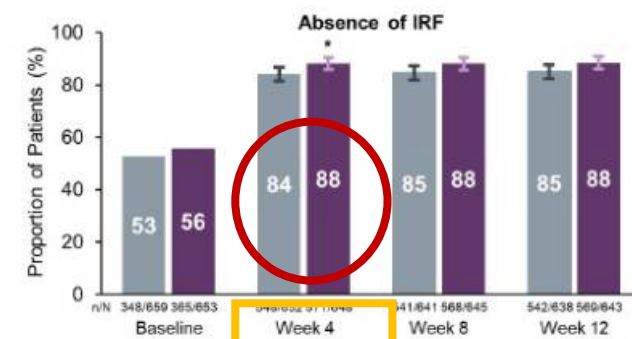
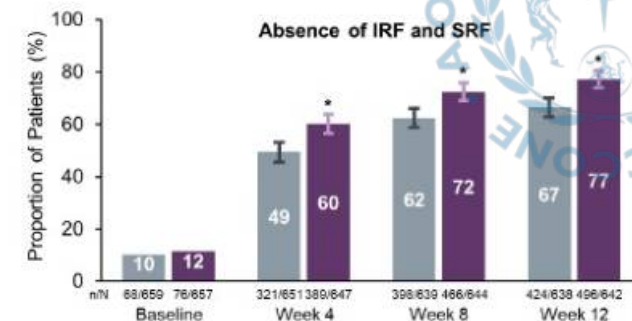
Journal Pre-proof

Anatomic Outcomes With Faricimab vs. Aflibercept in the Head-to-Head Dosing Phase of the TENAYA/LUCERNE Trials in Neovascular AMD

Chui Ming Gemmy Cheung, MBBS, FRCOphth, Jennifer I. Lim, MD, Siegfried Priglinger, MD, FEBO, Giuseppe Querques, MD, PhD, Philippe Margaron, PhD, Shriji Patel, MD, MBA, Audrey Souverain, PharmD, MSc, Jeffrey R. Willis, MD, PhD, Ming Yang, PhD, Robyn Guymer, MBBS, PhD



■ Aflibercept Q8W (n = 664) ● Faricimab up to Q16W (n = 665)



EARLY DRY EFFECT DI FARICIMAB: la nostra esperienza

26 occhi di 26
pazienti
✓ tutti naive

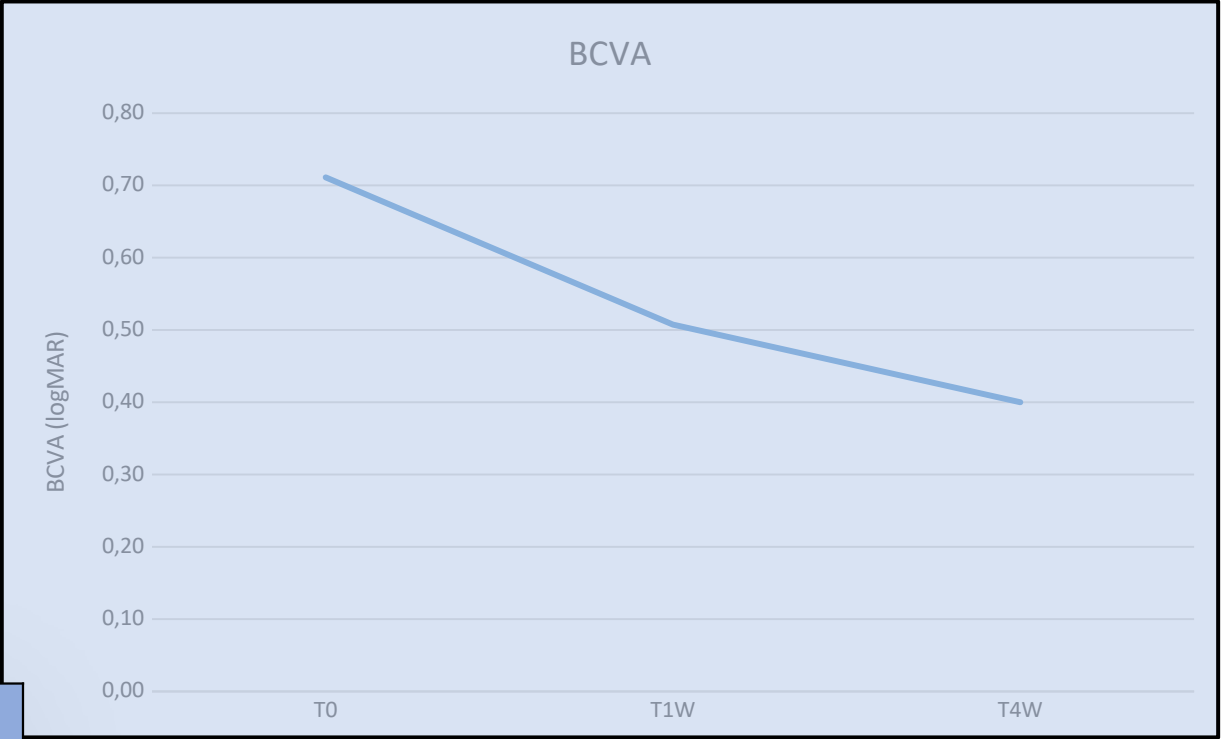
Parametri valutati

| | | | | | |
|---|------|---|-----|---|-----|
| ✓ | BCVA | ✓ | IRF | ✓ | PED |
| ✓ | CRT | ✓ | SRF | | |

Timeline

T0=baseline T1w=7 giorni T4w=4
settimane

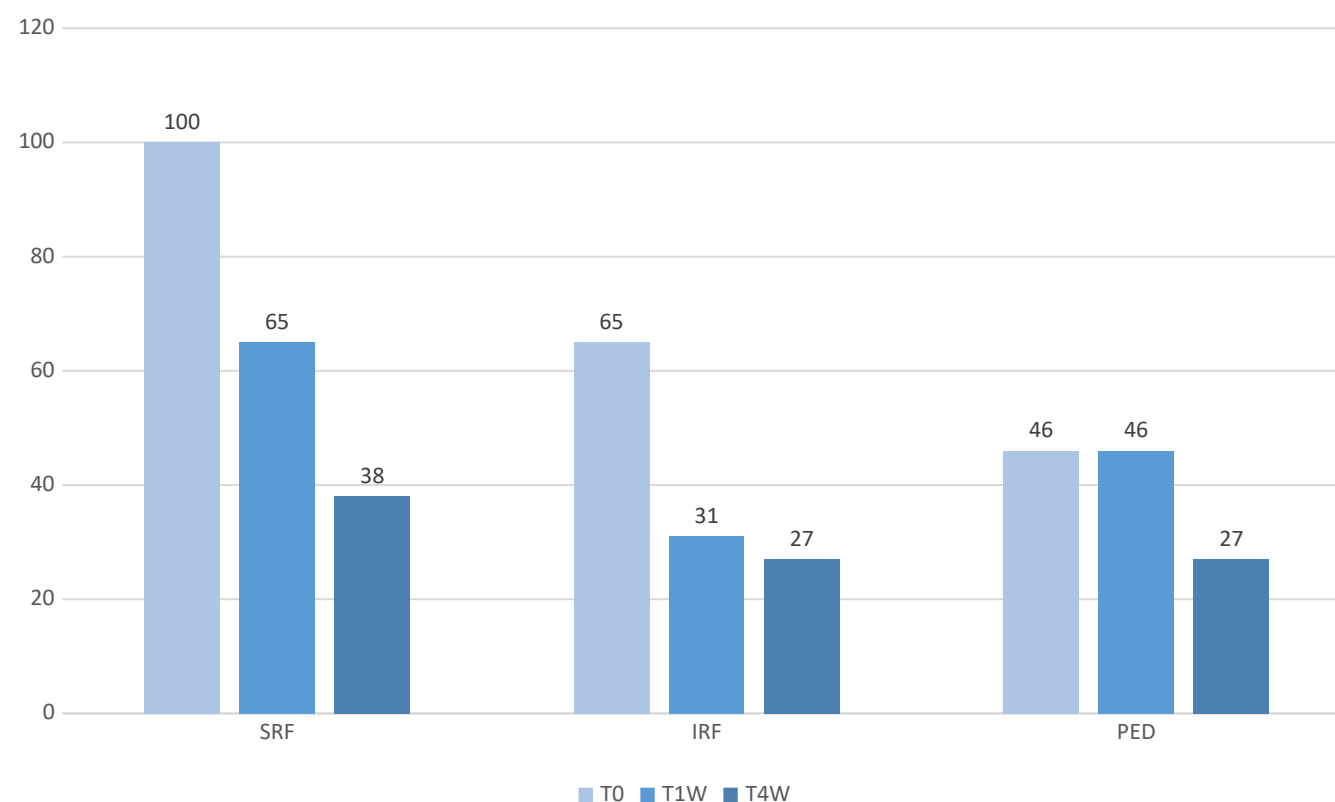
| | BCVA LogMAR | | | |
|-------|-------------|-------------|--------------|-------|
| | T0 | T1W | T4W | ANOVA |
| media | 0,71 ± 0,49 | 0,51 ± 0.35 | 0,40 ± 0.30* | 0.014 |
| min | 0,10 | 0,00 | 0,00 | |
| max | 1,70 | 1,10 | 1,00 | |



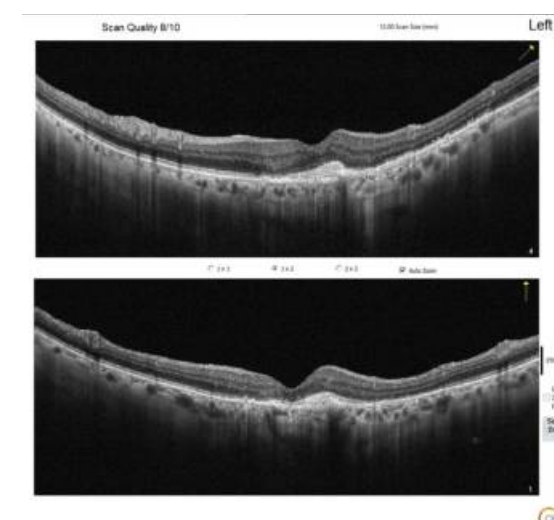
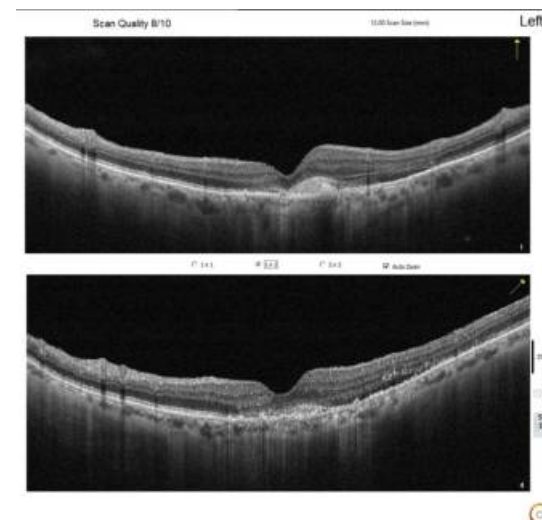
Tukey HSD TW4 vs baseline p=0.011

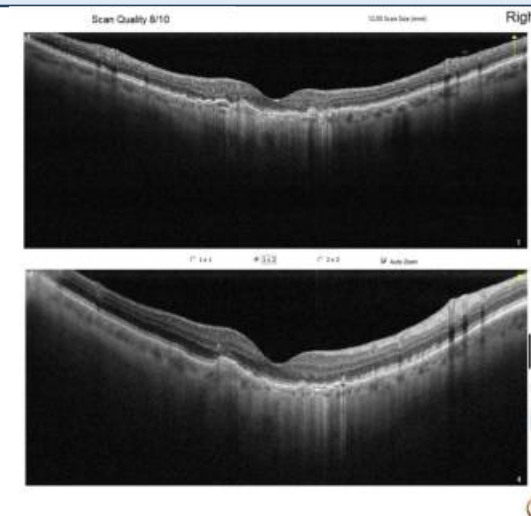
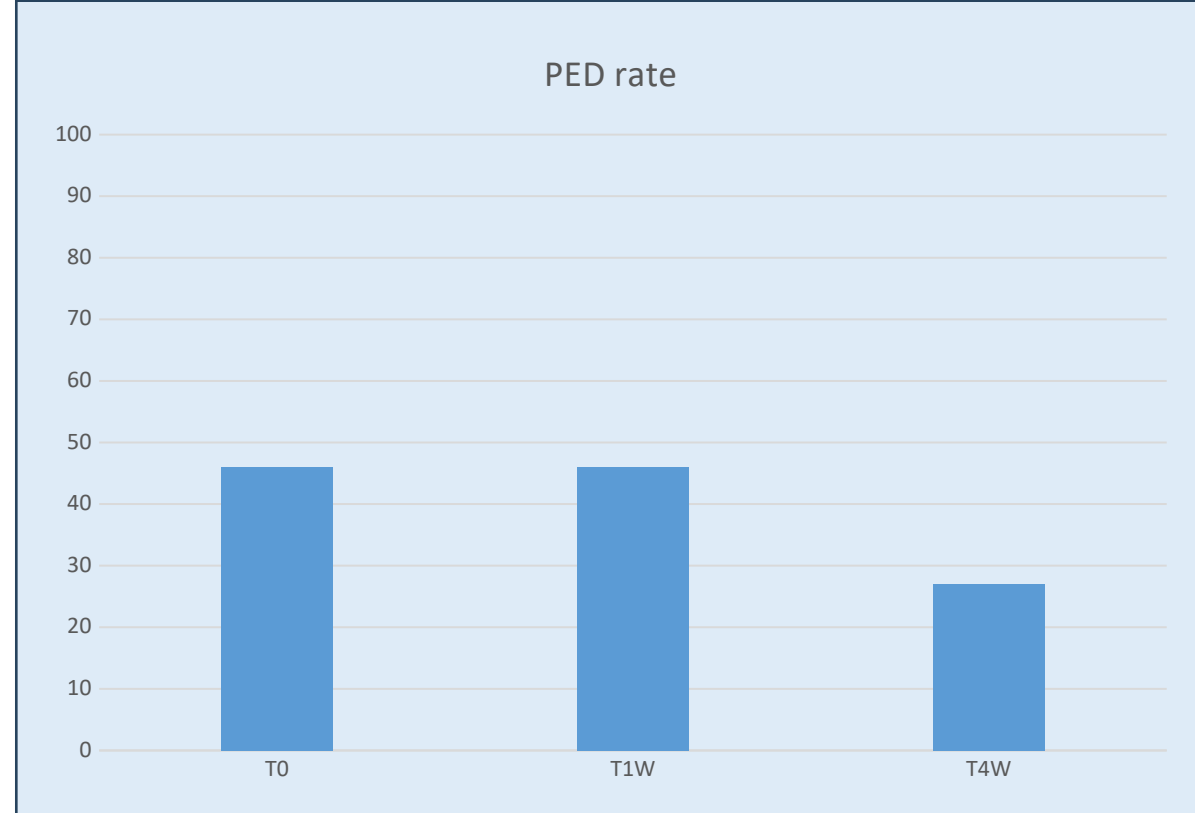


| | CRT | | | |
|-------|-----------|-----------|------------|-------|
| | T0 | T1W | T4W | ANOVA |
| media | 377 ± 165 | 294 ± 120 | 257 ± 108* | 0.021 |
| min | 210 | 163 | 148 | |
| max | 762 | 607 | 540 | |



| | SRF% | IRF% | PED% |
|-------------------|--------|-------|------|
| T0 | 100 | 65 | 46 |
| T1W | 65 | 31 | 46 |
| T4W | 38 | 27 | 27 |
| Cochran Q | <0.001 | 0.032 | ns |
| pairwise 1w vs T0 | 0.023 | - | |
| pairwise 4w vs T0 | <0.001 | 0.027 | |





| | Altezza PED | | | |
|-------|-------------|----------|-----------|-------|
| | T0 | T1W | T4W | ANOVA |
| media | 104 ± 146 | 86 ± 121 | 52 ± 103* | 0.187 |
| min | 0 | 0 | 0 | |
| max | 566 | 375 | 350 | |



Intravitreal faricimab for treatment naïve patients with neovascular age-related macular degeneration: a real-world prospective study



Gabriela Grimaldi^{1*}, Giuseppe Cancian¹, Arianna Paris¹, Michele Clerici¹, Giulio Volpe¹ and Moreno Menghini¹



DOPO LOADING PHASE

- ✓ 21 occhi di 19 pazienti naïve
- ✓ 4 IVT a W4 di Faricimab (loading phase)
- ✓ Il 93% dei pazienti mostrava una scomparsa dei fluidi alla fine della loading phase

Table 2 Functional and morphological outcomes

| | Baseline (T0) | Week 12 (T1) | 1st Extension (T2) | Last follow-up (T3) |
|-----------------------------------|--------------------|-------------------|--------------------|---------------------|
| | Md [IQR] | Md [IQR] | Md [IQR] | Md [IQR] |
| BCVA (logMAR) | 0.4 [0.3, 0.5] | 0.3 [0.1, 0.4] | 0.3 [0.1, 0.4] | 0.1 [0.1, 0.4] |
| CST (μm) | 546 [423, 664] | 271 [231, 296] | 281 [236, 374] | 284 [259, 326] |
| Macular volume (mm ³) | 9.98 [8.88, 11.45] | 7.85 [7.41, 8.19] | 7.84 [7.35, 8.24] | 7.90 [7.43, 8.29] |
| PED height (μm) | 343 [279, 415] | 128 [79, 272] | 162 [90, 275] | 165 [100, 309] |

BCVA: best corrected visual acuity; CST: Central Subfield Thickness; PED: Pigment Epithelial Detachment



Real-World-Data of Treatment-Naïve and Previously Treated Patients Receiving Up to 3 Injections of Faricimab in Neovascular Age-Related Macular Degeneration

Berenike Cornelia Kunzmann, Alexandra Stefanie Schweig, Karl Ulrich Bartz-Schmidt, Bianca Sobolewska



Table 2 Outcome After One Injection of Faricimab, n=170 Eyes (136 Patients)

| Variable | Baseline Mean±SEM | Follow-Up Mean±SEM | Change | P-value |
|---|----------------------|-----------------------|--------------|---------|
| All patients (170 eyes, 136 patients) | | | | |
| ETDRS (letters) | 64.68±1.20 | 65.53±1.06 | +0.85±0.61 | 0.286 |
| CST (µm) | 335.99±7.46 | 304.44±6.27 | -31.56±5.61 | <0.001 |
| Treatment-naïve patients (10 eyes, 10 patients) | | | | |
| ETDRS (letters) | 62.50±7.57 | 67.50±2.81 | +5.00±6.50 | 0.461 |
| CST (µm) | 393.50±37.34 | 296.70±9.63 | -94.10±39.74 | 0.042 |
| Patients switched from other anti-VEGF agents (160 eyes, 126 patients) | | | | |
| ETDRS (letters) | 64.81±1.19 | 65.41±1.11 | +0.59±0.52 | 0.364 |
| CST (µm) | 332.40±7.52 | 304.92±6.63 | -27.65±5.33 | <0.001 |

DOPO 1 IVT

Naive

↑ BCVA media è aumentata di +5,00 (e ±6,50)
↓ lettere

CST medio si è ridotto di -94,10 (e ±39,74) µm

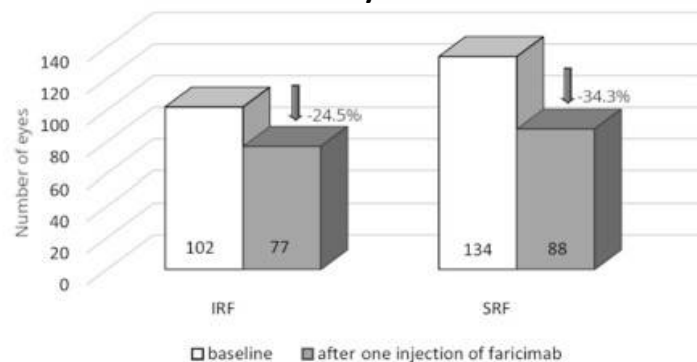
Switch

↑ BCVA media è aumentata di +0,59 (e ±0,5) lettere
↓ CST medio si è ridotto di -27,65 (e ±5,33) µm

DOPO 1 IVT

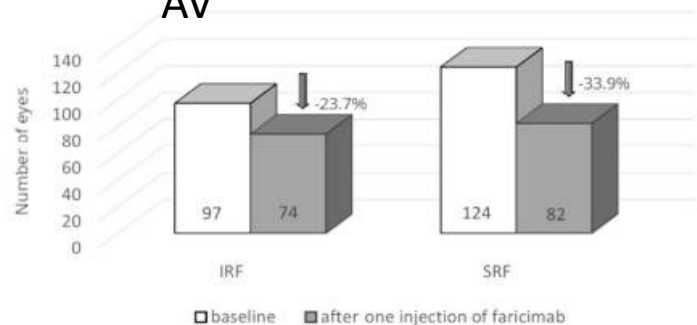
A

All eyes



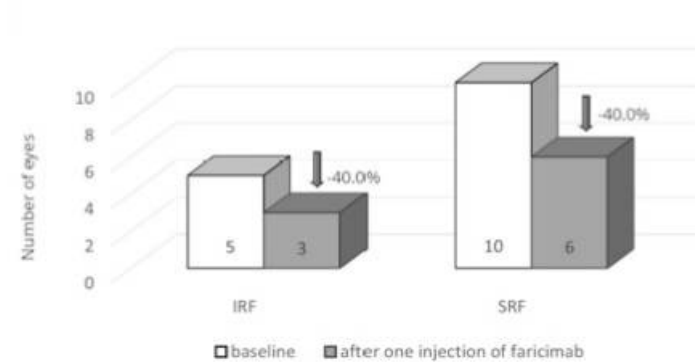
B

Switch da altri
AV



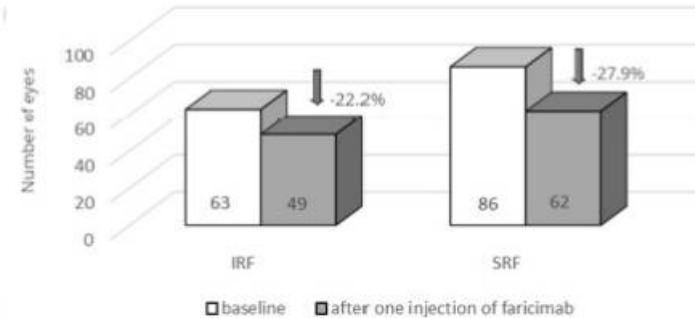
C

Naive



D

Switch da Afli



FARICIMAB VS AFLIBERCEPT

43 occhi per ciascun gruppo

Ad 1 mese con **Faricimab**

- ✓ ↑ BCVA
- ✓ presenza di fluido subretinico o intraretinico residuo nel **18,6%**

Ad 1 mese con **Aflibercept**

- ✓ BCVA stabile
- ✓ presenza di fluido subretinico o intraretinico residuo nel **41,9%**

Entrambi i gruppi hanno mostrato miglioramenti significativi in BCVA, CMT e CCT a 1, 2 e 3 mesi rispetto alla baseline.

A 3 mesi non ci sono differenze significative nella BCVA fra i

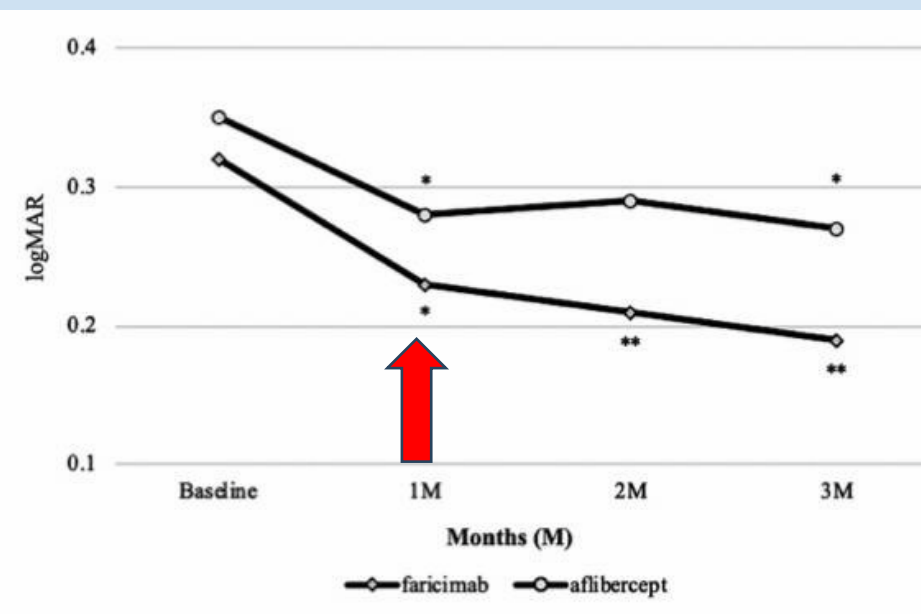
Graefe's Archive for Clinical and Experimental Ophthalmology (2024) 262:3971–3978
<https://doi.org/10.1007/s00417-024-06582-y>

MEDICAL OPHTHALMOLOGY

Three-month outcomes of treatment with faricimab or aflibercept for neovascular age-related macular degeneration: a propensity score matching study in a Japanese population

Yosuke Fukuda¹ · Shoji Notomi¹ · Satomi Shiose¹ · Yusuke Maehara¹ · Kohei Kiyohara¹ · Kohta Fujiwara¹ · Sawako Hashimoto¹ · Kumiko Kano¹ · Keijiro Ishikawa¹ · Toshio Hisatomi² · Koh-Hei Sonoda¹

Received: 2 May 2024 / Revised: 2 July 2024 / Accepted: 13 July 2024 / Published online: 29 July 2024
© The Author(s), under exclusive licence to Springer-Verlag GmbH Germany, part of Springer Nature 2024





La proporzione di occhi **con SRF residuo a 1 mese** è risultata **significativamente inferiore** nel gruppo faricimab rispetto al gruppo aflibercept



Graefes Archive for Clinical and Experimental Ophthalmology (2024) 262:3971–3978
<https://doi.org/10.1007/s00417-024-06582-y>

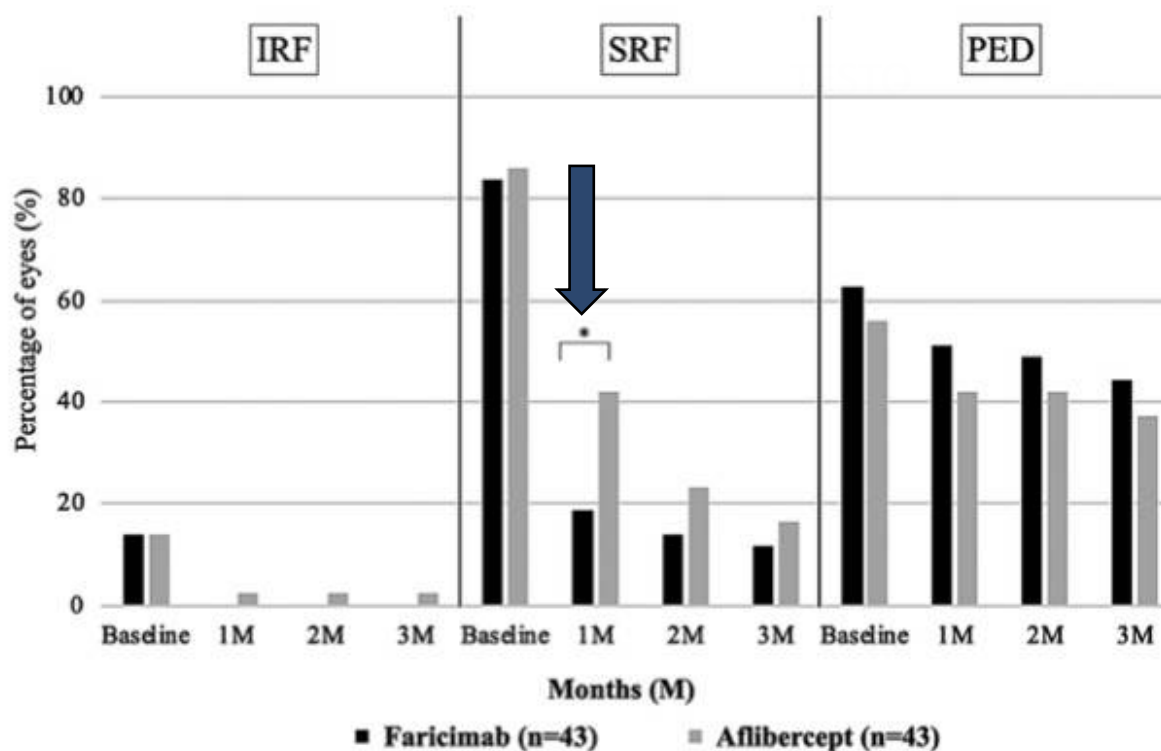
MEDICAL OPHTHALMOLOGY

Three-month outcomes of treatment with faricimab or aflibercept for neovascular age-related macular degeneration: a propensity score matching study in a Japanese population

Yosuke Fukuda¹ · Shoji Notomi¹ · Satoshi Shiose¹ · Yusuke Maehara¹ · Kohei Kiyohara¹ · Kohta Fujiwara¹ · Sawako Hashimoto¹ · Kumiko Kano¹ · Keijiro Ishikawa¹ · Toshio Hisatomi² · Koh-Hei Sonoda¹

Received: 2 May 2024 / Revised: 2 July 2024 / Accepted: 13 July 2024 / Published online: 29 July 2024
© The Author(s), under exclusive licence to Springer-Verlag GmbH Germany, part of Springer Nature 2024

Fig. 5 Presence of IRF, SRF, and PED following treatment with faricimab or aflibercept. The proportion of eyes exhibiting IRF, SRF, and PED in the faricimab and aflibercept groups at baseline, 1-, 2-, and 3-month. In both groups, the amount of any fluids decreased as the number of injections increased. A significant difference in the proportion of eyes with residual SRF was observed between the groups at 1-month (* $P=0.03$). Abbreviations: IRF, intraretinal fluid; SRF, subretinal fluid; PED, pigment epithelium detachment



Faricimab

- ✓ **Non inferiore** ad Aflibercept per riduzione di fluidi e BCVA nella nAMD
- ✓ Sembra possa favorire una risposta iniziale **più rapida** e un miglioramento visivo rispetto ad Aflibercept



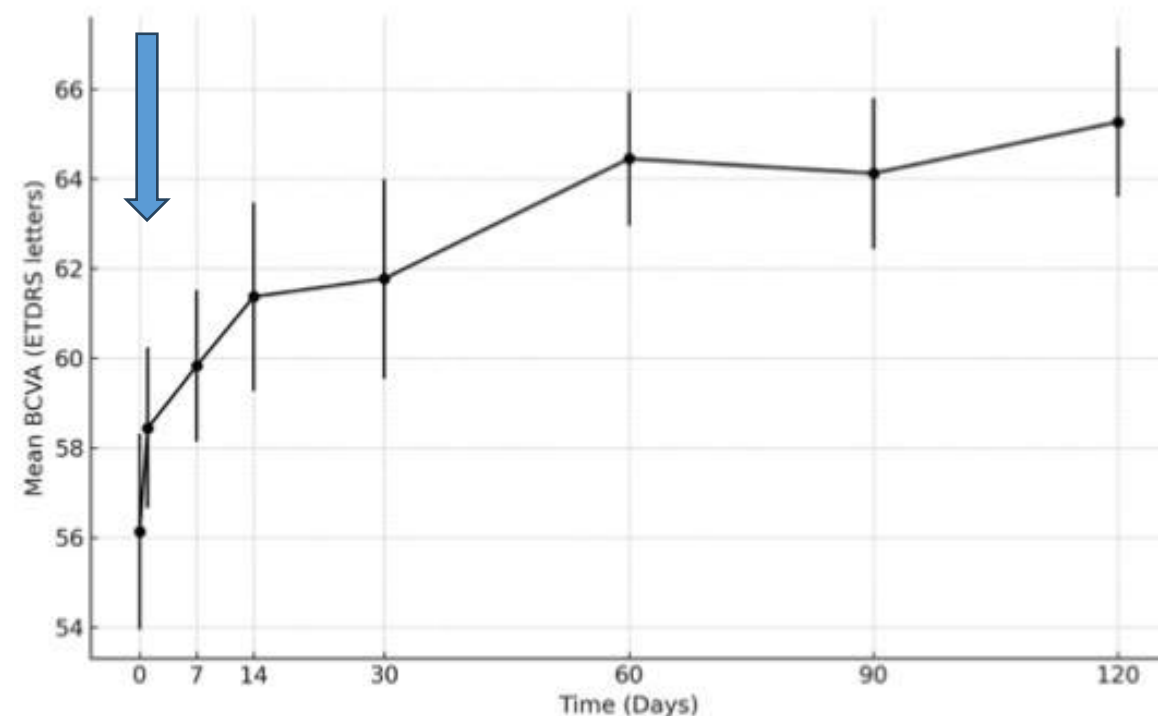
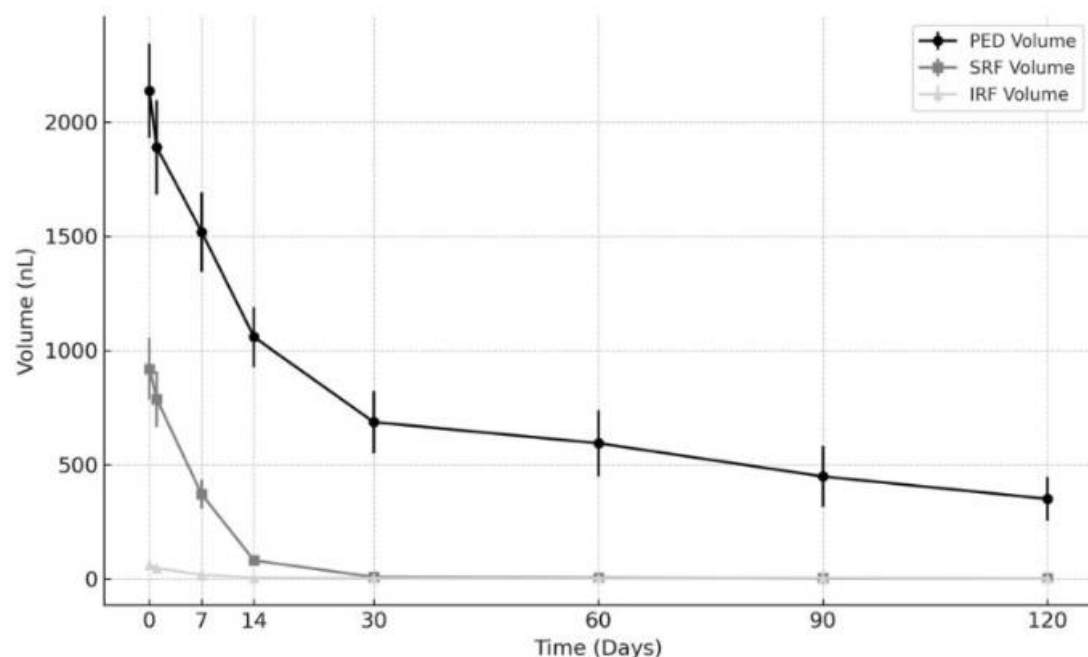
Faricimab in Neovascular AMD Complicated by Pigment Epithelium Detachment: An AI-Assisted Evaluation of Early Morphological Changes



Daniele Veritti · Valentina Sarao · Marco Gonfiantini · Leopoldo Rubinato ·

Paolo Lanzetta

Ophthalmol Ther. 2024 Oct;13(10):2813-2824.





Grazie per l'attenzione



XLIX CONGRESSO REGIONALE S.O.SI • 10-12 APRILE 2025 • GIARDINI NAXOS (ME)